

# Roffey Park Institute to Host Virtual AI Conference Exploring the Human Future of Work

Wednesday 21 May, 2025

**Roffey Park Institute**, an internationally renowned centre for executive education and organisational development, will host its **Virtual AI Conference 2025** on **18th June** – a timely gathering that tackles one of the most urgent questions facing global workplaces today: *how can we shape a human-centred future of work in the age of artificial intelligence?*

With AI reshaping economies, leadership, and culture at pace, the conference brings together world-class thinkers, executives, and practitioners for a day of bold ideas, live debate and practical insight. From the implications of AI for leadership and ethics, to its role in enhancing wellbeing, performance and equity at work, the event aims to spark dialogue and action across industries and borders.

## Conference Highlights Include:

- **New Research:** Exclusive findings from Roffey Park's latest international study on AI's impact on leadership, decision-making and organisational culture.
- **Keynote Speakers:** Provocative sessions from thought leaders at the forefront of AI, sustainability, psychology and systems thinking.
- **Panel Discussions:** Real-world perspectives from diverse global organisations using AI to tackle climate change, manage complex geopolitics and build inclusive workplaces.
- **Interactive Labs:** Hands-on virtual spaces for leaders to explore responsible AI use in talent management, hybrid collaboration and strategic foresight.

"As AI accelerates disruption, leadership must adapt not only technologically, but also emotionally and ethically," says **Dr Arlene Egan**, CEO of Roffey Park Institute. "This conference is about navigating complexity with humanity. We'll explore not just how AI can work for us, but how it can uplift people and communities when used wisely."

## A Global Conversation with Local Impact

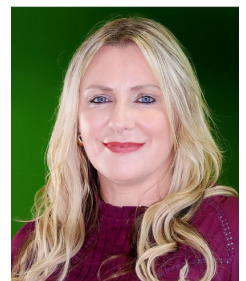
The event will feature case studies from Asia-Pacific to Europe, highlighting how organisations are embedding AI in ways that reflect local challenges and values. Delegates will hear directly from leaders transforming education access in rural areas, improving healthcare systems using predictive data, and navigating workforce reskilling in sectors hardest hit by automation.

## Who Should Attend?

This event is open to senior leaders, HR professionals, change agents, policy makers, educators, and anyone passionate about the responsible, human-centred integration of AI in the workplace.

Register Today at <https://www.roffeypark.com/ai>

## Media:



## Related Sectors:

Business & Finance :: Charities & non-profits :: Computing & Telecoms :: Construction & Property :: Education & Human Resources :: Government :: Health :: Manufacturing, Engineering & Energy :: Medical

## Company Contact:

—

### [Roffey Park Institute](#)

T. 01293 851644

E. [sam.adams@roffeypark.ac.uk](mailto:sam.adams@roffeypark.ac.uk)

W. <https://www.roffeypark.com>

[View Online](#)

### Additional Assets:

<https://www.roffeypark.com/wp-content/uploads/2025/02/ai-website.jpg>

**Newsroom:** Visit our Newsroom for all the latest stories:

<https://www.roffeyparkinstitute.pressat.co.uk>

## Related Keywords:

AI :: Leadership :: Innovation ::  
Workplace :: Ethics :: Conference  
:: Wellbeing :: Hybrid ::  
Sustainability :: Education ::  
Executive :: Culture ::  
Development :: Technology ::

## Scan Me:

