

Parcel2Go launches International Shipping Hub – a definitive guide to the latest EU VAT, customs and import tax changes

Monday 2 August, 2021

Parcel2Go launches International Shipping Hub – a definitive guide to the latest EU VAT, customs and import tax changes.

- Shipping hub is an indispensable tool for businesses who ship abroad and those who regularly trade on online marketplaces and web platforms such as eBay and Shopify.
- It has been produced in response to the major changes to EU VAT that were rolled out on 1 July 2021, which affect all businesses selling goods to customers in the EU and beyond.
- Information covers all the essential VAT, import tax and customs considerations - including DDP, DDU and EORI.
- Comprehensive guides, checklists and more help ensure senders don't fall foul of new taxes and regulations.

Parcel2Go – the UK's leading parcel comparison website – has launched a comprehensive information hub covering all essential aspects of international shipping. Produced to guide users through the major EU VAT changes that came into effect on 1 July 2021, the hub is split into specific sections for business shippers and casual consumer senders. Featuring essential guides, checklists, EU country VAT calculators and more, it's a one-stop-shop for ensuring parcels can be sent without holdups and unexpected extra costs as they enter and leave EU countries.

As new EU VAT and customs regulations come into place, many businesses and consumers are unaware of how this will impact their international shipping processes and costs. Having accurate and user-friendly information that cover all international shipping considerations will help ensure those shipping abroad from the UK (and vice versa) do not get caught out.

Adam Harris, Managing Director for Comparison Sites at Parcel2Go said:

"When creating the International Shipping Hub for our customers, we set out to build a genuinely useful resource to help UK businesses and everyday senders avoid delays to their shipments. With the post Brexit changes to the way VAT is calculated and applied to UK originating shipments, we recognised that getting to grips with the new regulations could be challenging – hopefully, we've helped explain and simplify things for our customers by creating easy to use solutions that add value to the shipping process"

Parcel2Go.com is the UK's leading parcel delivery comparison website. Our services connect consumers, small businesses and online marketplace sellers with the best value parcel delivery services according to their needs. From small packets to large parcels, our website allows customers to ship to destinations throughout the UK and internationally, and all for a surprisingly cheap price.

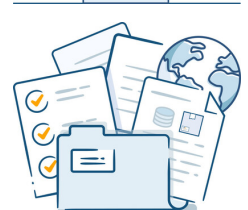
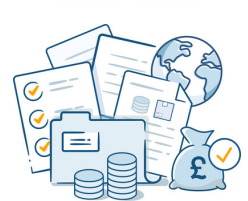
Founded over 10 years ago, Parcel2Go has grown quickly to become the UK's top parcel broker. In 2011 the company was listed as one of the top 100 fastest growing technology companies (Sunday Times Tech Track 100). Parcel2Go stands out from most other parcel delivery comparison sites by way of our outstanding end-to-end customer service. Our customer services team is available 24 hours every day to resolve any issues at any stage of the process, from collection through to tracking the delivery, regardless of the service booked.

For all enquiries please contact:

Larisha McGurty, Head of Marketing at Parcel2Go

E: larisha.mcgurty@parcel2go.com

Media:



Related Sectors:

Consumer Technology ::
Personal Finance :: Retail &
Fashion ::

Related Keywords:

IOSS :: DDP Services :: DDU ::
International Shipping :: VAT ::
Brexit :: EU Parcel Delivery ::

Scan Me:



Company Contact:

—

Parcel2Go

E. b.cunningham@parcel2go.com

W. <https://www.parcel2go.com/>

Additional Contact(s):

larisha.mcgurty@parcel2go.com (head of marketing)

[View Online](#)

Additional Assets:

<https://www.parcel2go.com/international-shipping-hub>

Newsroom: Visit our Newsroom for all the latest stories:

<https://www.parcel-2-go.pressat.co.uk>