

One Day in Wonderland at the Pelican House Pop-Up Theatre

Wednesday 7 April, 2021

ONE DAY IN WONDERLAND

Lights of London present a new adaptation of Lewis Carroll's classic adventure in this fun family show for the winter season.

31st May to 5th June 2021

Shows at 2.00 and 4.00 pm.

At the [Pelican House Pop-Up Theatre](#), 144 Cambridge Heath Road, London, E1 5QJ. A new covid-secure open air rain-covered theatre space in the heart of the community.

Nearest tube: Bethnal Green

Ticket £12 adult, £8 children with group reductions in households

<https://www.ticketsource.co.uk/lights-of-london-productions>

For press and industry comps please contact your cast member or email lightsoflondonproductions@gmail.com

Ticket £12 adult, £8 children with group reductions in households. Online only.

Refreshments, meals and snacks available from the [Pelican House Café](#) upstairs.

Like and follow us on:

www.lightsoflondonproductions.com

www.facebook.com/LightsofLondonProductions

<https://twitter.com/LOLondonProds>

www.instagram.com/lightsoflondonproductions

About the Show:

Alice is bored with her life and one day, she loves to daydream and one day a series of unexpected events lead her into the magical Wonderland ruled over by the **Red Queen** under the shadow of the mysterious **Jabberwocky**, a magical world full of new friends and frenemies who seem to need Alice's help. Why is the **Mad Hatter** mad, and the **White Rabbit** always late?

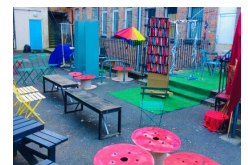
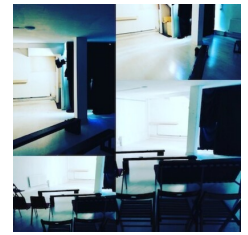
Was **Humpty Dumpty** pushed or did he fall and why are all the roses painted red? She really wishes **Tweedledum** and **Tweedledee** would stop fighting and the **Cheshire Cat** would stop smiling. What with a smoking **Caterpillar**, time standing still, and a tea-drinking **Dormouse**, Alice doesn't know whether she's coming or going, but the big question is will she become Queen or go back to her "ordinary" life or is life in the upside-down world of **Wonderland** better?

Lights of London present a new adaptation of **Lewis Carroll's** classic adventure in this fun **family** show for the summer half-term, in an outdoor rain-covered **pop-up theatre**, with fixed seating, and socially-distanced, household bubble bookings.

The show runs just over an hour with no interval and is most suitable for children aged 6 to 11 and their adults, but may be enjoyed by younger children too. **Refreshments**, meals and snacks available from the Pelican House Café upstairs, and toilets for emergency use.

Ticket £12 adult, £8 children with group reductions in households

Media:



Related Sectors:

Entertainment & Arts ::

Cast:

Miranda Braun as Alice

Michael J Ansley as Mad Hatter

Jed McLoughlin as White Rabbit

Darrie Gardner as The Red Queen

Barnaby Quinn as March Hare

Paul D Stephenson as Cheshire Cat

About the Venue:

The Pelican House pop-up theatre is a new bespoke theatre space comprising a covered outdoor courtyard and socially distanced flexibly seated basement theatre currently at 50% capacity. Fully licensed for events by Tower Hamlets council, for One Day in Wonderland, and includes bathroom facilities and refreshment at the popular local artisan Pelican House Cafe.

About the Company:

Lights of London are a Theatre and entertainment production company established in 2007 based in Shoreditch. As part of its theatre programme, Lights of London has produced quality classical productions, that celebrate the history and heritage of East London.

They recently produced a sell-out 'The Tempest', a socially distanced Brave New World in Finsbury Circus City Gardens. Other past productions include 'Shakespeare in Shoreditch' (Hackney Empire Studio), 'Measure for Measure' (Rose Theatre Bankside), 'Shakespeare's Women' (Barons Court theatre, Rose Theatre Bankside), 'The Magnetic Lady' (White Bear Theatre), 'A Child of the Jago' (The Rag Factory), and 'Othello' (Moors Bar Theatre). Light entertainment and musical shows include 'Angels Dining at the Ritz', (The Pheasantry/Leicester Square Theatre/Jermyn Street Theatre), 'Songbirds & Heroes' (Edinburgh Festival), 'Delovey' (Brighton Festival), 'Burlington Bertie' (Hackney Empire Studio).

Related Keywords:

[Onedayinwonderland ::](#)
[Covidsecuretheatre ::](#)
[Familytheatre ::](#) [Kidstheatre ::](#)
[Popuptheatre ::](#)
[Pelicanhousetheatre ::](#)
[Springshow ::](#) [Openairtheatre ::](#)
[Outdoortheatre ::](#)

Scan Me:



Company Contact:

Lights of London Productions

T. 02072532135

E. lightsoflondonproductions@gmail.com

W. <https://www.lightsoflondonproductions...>

View Online

Additional Assets:

<http://www.lightsoflondonproductions.com>

https://www.youtube.com/channel/UCWQpBbhee1Wbv0sF_7Tw3FQ

<http://www.pelicanhousetheatre.co.uk>

<https://www.youtube.com/channel/UCaXMc2iFD9CuEpf52vtMHRQ>

www.facebook.com/LightsofLondonProductions

<https://twitter.com/LOLondonProds>

www.instagram.com/lightsoflondonproductions

https://www.youtube.com/channel/UCWQpBbhee1Wbv0sF_7Tw3FQ

Newsroom: Visit our Newsroom for all the latest stories:

<https://www.lightsoflondonproductions.pressat.co.uk>