

# NORTH EAST ARTIST RETURNS HOME AFTER BREAKING INTO LONDON ART SCENE

Wednesday 29 March, 2017

**Abject Gallery** is pleased to announce the first North East solo exhibition by Ashington born artist **Jamie Evans**.

'**Dimethyltryptamine / Homecoming**' is Jamie Evans' debut solo exhibition in Newcastle Upon Tyne; the title refers to a psychedelic chemical compound which is endogenously found inside our brains. Jamie will be exhibiting a body of paintings which refer directly to his personal experiences with DMT. The exhibition includes a series of paintings that have only ever previously been exhibited in London. It will be a chance for people in the North East to see his work properly for the first time, and an opportunity to explore new possibilities in curation and installation.

Since graduating from a BA in fine art at Newcastle University in 2015, Jamie has exhibited in shows at StolenSpace Gallery, 5th Base Gallery and No Commission in London, and Haus Paula Becker gallery in Germany. And recently, he was commissioned by Rocnation to spray paint a piano for singer Emeli Sandé as she prepares to go tour. "I see my art as positivity - positive vibration - and when I look at a blank canvas or a wall outside, I'm inspired to turn what I see in my mind into a physical reality. Painting is very intuitive to me. I don't think too much about it, it just comes out fluently."

## Artist Statement:

"The ideology behind my work comes from my background in graffiti, I consider myself a participant in shaping the world around me, not a spectator; However, the methods I employ are very traditional - carefully priming canvases the correct way, making my own oil paint from pigment, taking care to source the best possible quality materials available to me. I'll then mix that together with spray paint in ways that create something uniquely new with great vibrancy. Graffiti taught me that things don't last forever, but in my art I'm looking for longevity - so again, it's a matter of bringing together those forces that don't necessarily sit side by side. Some see graffiti and fine art as things that can't be merged, but the show represents the culmination of my efforts to join two elements of art that I have an equal love for."

The preview for this exhibition takes place on Friday 5<sup>th</sup> May, 6pm – 9pm, featuring music, drinks and a chance to meet curator. The exhibition continuing to be open from 10<sup>th</sup> May – 10<sup>th</sup> June, Wednesday to Saturday, 12pm – 5pm. Entry is free.

Abject 2 Gallery, run by Breeze Creatives, is a new contemporary art gallery, in Newcastle city centre that exhibits a selection of national and international artists. Located on the 2<sup>nd</sup> floor of Bamburgh House on Market Street East.

More information is available at [www.abject.gallery](http://www.abject.gallery)

Jamie Evans Interviews:

<http://www.afternynemagazine.com/something-different-nine-minutes-jamie-evans/>

<http://www.chroniclelive.co.uk/news/north-east-news/how-newcastle-graffiti-artist-struck-12616394>

<https://www.stolenspace.com/2017/02/09/in-the-studio-with-jamie-evans/>

**Jamie Evans: Dimethyltryptamine / Homecoming**

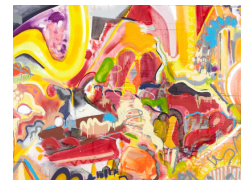
Preview: **Friday, 5<sup>th</sup> May 2017, 6:00pm – 9:00pm**

Exhibition: **10<sup>nd</sup> May – 10<sup>th</sup> June 2017**

Opening Times: **Wed – Sat, 12:00pm – 5:00pm**

Location: **Abject 2 Gallery, 2nd Floor, Bamburgh House, Market Street East, Newcastle upon Tyne,**

## Media:



## Related Sectors:

Entertainment & Arts ::

## Related Keywords:

Art Exhibition :: Jamie Evans ::  
Art Gallery :: Contemporary Art ::  
Street Art :: Newcastle ::  
Ashington :: Abject Gallery ::  
Breeze Creatives :: Bamburgh House ::

## Scan Me:



NE1 6BH

- ENDS -

## Information for editors

For media enquiries contact Zoe Anderson on 07533 195512 or email [info@breezcreatives.com](mailto:info@breezcreatives.com).

## Press image available

at: <https://www.dropbox.com/sh/z0nqxy072f1dlvv/AAAp1oW6eHc9RMbgZknzqzQaa?dl=0>

Additional images can be emailed upon request.

- **Breeze Creatives**, based in Newcastle upon Tyne, specialises in cultural projects and events around the North East of England, and provides artist studios and project spaces in Newcastle city centre. Breeze Creatives latest projects include Abject Gallery, a contemporary art gallery exhibiting a mixture of national and international emerging artists. [breezcreatives.com](http://breezcreatives.com)
- **Abject Gallery**, run by Breeze Creatives, is a new contemporary art gallery, in Newcastle city centre that exhibits a selection of national and international artists. Located on the 8<sup>th</sup> floor of Bamburg House on Market Street East, the gallery is also known for its stunning views of the Quayside including the Tyne Bridge, Sage and BALTIC. [www.abject.gallery](http://www.abject.gallery)

## Company Contact:

### Creative Culture Trust CIO

E. [info@creativeculturetrust.uk](mailto:info@creativeculturetrust.uk)

W. <https://www.creativeculturetrust.uk>

## Additional Contact(s):

Daniel Gibson

[info@creativeculturetrust.uk](mailto:info@creativeculturetrust.uk)

### [View Online](#)

## Additional Assets:

Press release

**Newsroom:** Visit our Newsroom for all the latest stories:

<https://www.creativeculturetrust.pressat.co.uk>