

FACE | TIME // Exhibition Presented by Dellasposa Fine Art // 4 - 10 November 2016

Wednesday 21 September, 2016

[FACE | TIME](#)

4 - 10 November 2016

[DELLASPOSA FINE ART](#)

90 Piccadilly, London, W1J 7NE

Face | Time is an exhibition presenting portraits of time past and time present; referencing the faded memories of the Old Masters while at once pushing the subject into the 21st Century. **Face | Time** is open to the public from Friday 4th to Thursday 10th November 2016 at 90 Piccadilly, London, W1J 7NE.

In a world of selfies, it is time to again look at the self; our own selves and those of others. Here, ideas of the self and time are mediated in new and recent works by artists Isabella Watling, Wanda Bernardino, Sabatino Cersosimo, Emma Hopkins, and Simon Davis - all of whom were specially selected for their ambitious and visionary conception of contemporary portraiture.

As the portrait serves to freeze time and extend the life of the represented individual, these paintings appear as records of specific moments in time and the evocation of something more lasting. Following in the tradition and techniques of the Old Masters, Isabella Watling portrays her subjects in the most elegant and refined manner. Wanda Bernardino's portraits appropriate individuals from historic paintings; in seeking the elusive connection with the past she uncovers the processes behind the original and transcribes marks across time. Italian artist, Sabatino Cersosimo, centres his art on man's psychological and relational complexity. Simon Davis paints his subjects with a muted pallet and subtle, introspective fashion, while Emma Hopkins depicts the raw humanity of her subjects with the greatest intensity.

Among the issues explored in the exhibition are the artist's sources of inspiration, the ways in which portraits engage with identity as they are perceived, represented, and understood and constructed, and how portraiture represents a particular occasion that transcends a single moment in time. The power of these portraits rests largely in this tension between the temporal and the permanent in contemporary art. The exhibition promises to be a fascinating exploration of portrait painting now.

ENDS

EDITORS NOTES

Dellasposa is a London based curatorial studio founded on the principle that art illuminates, inspires, and engages all. We specialise in unique exhibitions, commissions, and art consultancy. Whether you are invested in the art scene and or beginning your journey, we create unique relationships by connecting you with artists and the story of art. Through our exhibitions, we aim to stimulate audiences with new ideas and encourage an open discourse about art and culture today. We offer independent advice to guide you through collecting art in today's international, and often opaque art market. With scholarship at the core of our work, we are guided by each individual's unique aesthetics and interests. Holding exhibitions throughout London, we are proud to present emerging and established artists from around the world. Art is to be celebrated, enjoyed, and appreciated. We bring the world of art to you.

Dates and Opening Hours

PRESS PREVIEW: Thursday 3rd November 2016, 17:00 - 18:00

PRIVATE VIEW: Thursday 3rd November 2016, 18:30 - 21:30

CURATOR'S TALK: Tuesday 8th November 2016, 18:30 - 20:30

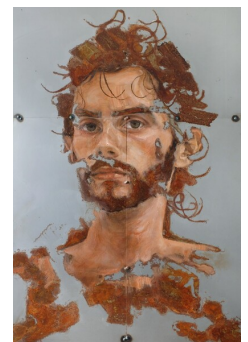
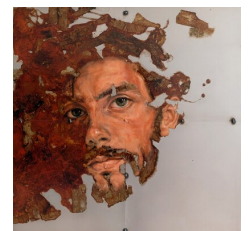
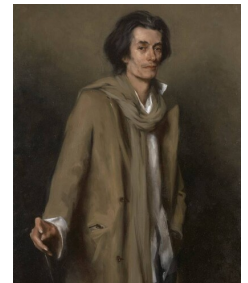
Open to the Public: Friday 4th November - Thursday 10th November 2016

Gallery Opening Hours: Monday - Saturday 09:00 - 21:00 | Sunday 11:00 - 17:00

Exhibition Catalogue: Face | Time will be accompanied by a fully illustrated online catalogue, with a contributing essay by the curators.

A portion of proceeds from this exhibition are donated to the charity, Resources for Autism.

Media:

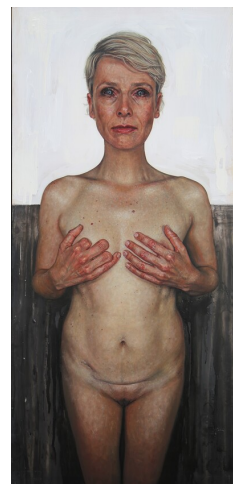


More information available at www.dellasposa.com

Press images available at:

<https://www.dropbox.com/sh/8gf5kk0nkrr67tu/AADCffigMLwDoN6OwdXMLHdSa?dl=0> (click [here](#))

For all enquiries, please contact Jessica McBride at info@dellasposa.com or +44 (0)203 286 1017



Company Contact:

[Dellasposa](#)

T. +44 (0)20 3286 1017

E. info@dellasposa.com

W. <https://www.dellasposa.com>

[View Online](#)

Additional Assets:

FACE | TIME - EXHIBITION - PRESS RELEASE

<http://www.dellasposa.com>

Newsroom: Visit our Newsroom for all the latest stories:

<https://www.dellasposa.pressat.co.uk>



DELLASPOSA



Related Sectors:

Business & Finance ::
Entertainment & Arts :: Home & Garden :: Personal Finance ::
Retail & Fashion :: Travel & Tourism :: Women & Beauty ::

Related Keywords:

Art :: Contemporary Art :: London :: Exhibition :: Portraiture ::
Portrait Painting :: Artist :: Arts And Culture :: Arts And Entertainment :: Art Collection ::

Scan Me:

