

# Dimebox Releases New UI With Infinitely Scalable Data Visualization Capabilities

Thursday 8 February, 2018

Amsterdam, the Netherlands, January 22, 2018—

Dimebox, a global payment technology provider, announced the release of a new user interface (UI) for their white-label software platform, featuring GPU-powered data visualization capabilities. With this release, users can interactively explore billions of data records, without sacrificing performance. Dimebox is the first payments platform to leverage GPU technology for payment data aggregation and presentation.

Dimebox provides white-label payment technology to financial institutions globally. Solutions such as transaction processing, fraud prevention, and data analytics are all offered through one API, within a unified payment platform. With the new UI, clients of Dimebox benefit from the platform's infinitely-scalable data visualization capabilities.

"A key mission at Dimebox is to facilitate the growth of our customers by offering them unprecedented access to the payment data they need to make smart business decisions. Our gateway aggregates and structures this data, and our UI presents it analytically, from the broadest overviews to the finest details. This interactive process is designed to be easy to use, and actionable in real time" said David Jokinen, CPO of Dimebox.

Market research revealed that payment service providers want to offer their customers a multitude of information at once, affording them the freedom to choose what to focus on. The non-modal structure of the UI includes large-scale representations like graphs and tables, and detail panes containing all elements of a given item, accessible concurrently in the same view.

In addition to its data visualization capabilities, the UI supports essentially all capabilities of the comprehensive API, including customer management, a payment terminal for mail-order and telephone-order transactions, extensive transaction reporting, and a full suite of administrative tools.

## About Dimebox

Dimebox is the payment technology provider of the future offering their payment solutions through one platform and a single API. They are the only provider of a full-stack acquiring solution that is completely white-label and flexible enough to embrace new payment methods and innovations quickly and effortlessly.

Dimebox goes beyond payment processing by offering their clients a modular and white-label PaaS solution which includes fully integrated risk management, a fraud engine powered by machine learning, chargeback automation and billing & settlement capabilities enriched with smart data analytics. The result is a powerful end-to-end processing solution enabling real-time decision-making throughout the entire payments value chain. With offices in Amsterdam and Brisbane, Dimebox provides clients from all over the world with solid and innovative payment technology.

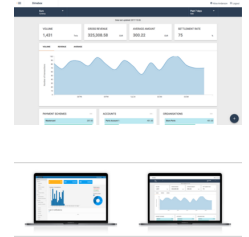
Please visit <https://dimebox.com/>

Media Contact: [press@dimebox.com](mailto:press@dimebox.com)

Follow us on LinkedIn: <https://www.linkedin.com/company/dimebox-payments>

and on Twitter: @dimeboxpayment

## Media:



## Related Sectors:

Business & Finance ::

## Related Keywords:

Payments :: Fintech :: Online Payments :: Data Visualisation :: Payment Data :: GPU :: Payment Gateway :: Data Analytics :: Dimebox :: Payment Technology :: Amsterdam ::

## Scan Me:



## Company Contact:

### Dimebox

T. +31653573065

E. [thomas@dimebox.com](mailto:thomas@dimebox.com)

W. <https://www.dimebox.com>

## Additional Contact(s):

Singel 250-2

1016AB Amsterdam

### View Online

## Additional Assets:

**Newsroom:** Visit our Newsroom for all the latest stories:

<https://www.dimebox.pressat.co.uk>