

Architects bring Roald Dahl's Underground Village to life in Buckinghamshire School

Wednesday 13 January, 2016

Much-loved children's author Roald Dahl was the inspiration for a new dining hall and after school facility in Buckinghamshire's Prestwood Infant School. The author – who lived locally – had already apparently based the head teacher Miss Trunchbull in his popular book Matilda on a former real-life head teacher at the school.

Architects De Rosee Sa and PMR turned to the pages of Dahl's books again for the new dining hall – and this time drew from the story of Fantastic Mr Fox. The cunning character inspired them by declaring he intended to make "A little underground village, with streets and houses on each side – separate houses for badgers and moles and rabbits and weasels and foxes." He then added: "And every day I will go shopping for you all. And every day we will eat like kings".

The £158,000 colourful new building is called Little Hall and will also be rented out as a facility for the local community, bringing in much-needed revenue for the school. It has playful features such as a small one-to-one teaching space and two WC's painted to depict a fox's den, a bush with berries and lastly Mr Fox's tail. A large plywood bookcase runs the full length of the front of the building with window seats for reading.

Each class of pupils in the building is named after an animal and matched with a window or doorway, to signify their part in the 'underground village.'

The dining hall contains a kitchenette and a servery for the provision of hot school meals for up to 96 children, as well as refreshment facilities for the after-school club. The project itself was as a result of the government's Hot Dinners initiative.

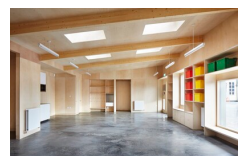
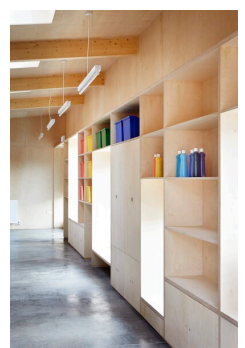
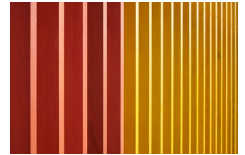
Little Hall has six skylights allowing plenty of natural daylight as well as sustainable internal plywood and concrete flooring. Contractor for the project was RIR Construction Limited.

Nicola Raher, head teacher said: "We are absolutely delighted with our new Little Hall, there was much excitement amongst the children on the first day of term when they learnt they were going to have their lunch in the new building. The atmosphere was amazing, and having children in the building made it really come alive. The Little Hall is exactly as I wanted, a fun building that was unique and had the WOW factor."

Max de Rosee, Director of De Rosee Sa said he enjoyed the reaction of the pupils when they went to explore their new facility. "It has been incredibly rewarding for us as architects to see the delight on the pupil's faces," he said. "Design has great potential to inspire and it is our job as architects to push that agenda. We wanted to give the children something really special. Now they can refer to Roald Dahl when describing their school."

More information on the design project can be found on the website deroseesa.com

Media:



Company Contact:

—

The Double Unit

T. 02072215600

E. hanan@thedoubleunit.com

W. <https://www.thedoubleunit.com>

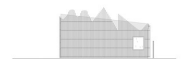
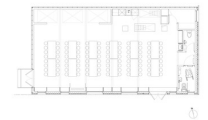
[View Online](#)

Additional Assets:

<https://www.dropbox.com/sh/zwxf1eeqmk87kxz/AABL5VW8eJi0Sb14Q80Tu64qa?dl=0>

Newsroom: Visit our Newsroom for all the latest stories:

<https://www.thedoubleunit.pressat.co.uk>



Related Sectors:

Construction & Property ::
Education & Human Resources ::
Entertainment & Arts :: Home &
Garden :: Women & Beauty ::

Related Keywords:

School :: Architecture :: Design ::
Roald Dahl :: De Rosee Sa ::
Design :: Literature ::

Scan Me:

