

ANS Global create 2000m² living wall in support of Woking Borough Council's sustainability goals

Wednesday 3 November, 2021

A car park in Woking, Surrey has been transformed into a biodiverse paradise with the help of ANS Global. Following the unique creation of green infrastructure from ANS Global, a car park and office block in Woking have introduced over 200,000 plants.

The newly rebuilt car park, situated on Victoria Way, now features a breath-taking living wall covering almost 2,000m². Grown in natural soil, the wall features native plants, which were seeded externally by ANS Global and transported to Victoria Way in individual modules.

The area now benefits from a range of colourful vegetation to improve aesthetics, enhanced air quality by trapping pollutants, as well as an overall flourish in nature and wildlife. In figures, the recent work completed by ANS Global on Victoria Way is responsible for extracting an estimated 2,600kg of carbon, whilst producing 3,400kg of oxygen per year.

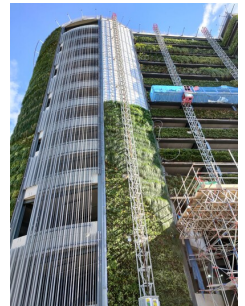
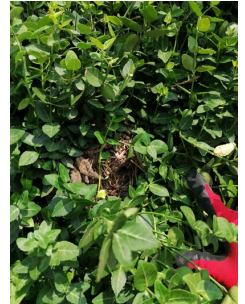
In further support of Woking Borough Council's sustainability goals, Victoria Way's car park also received a freshly installed intensive and extensive green roof, totalling 4,200m². This resulted in a further 5,460kg of carbon extraction, alongside an additional 7,140kg of oxygen delivered per year (approx.).

But the work from ANS Global didn't stop there. Dukes Court, an office block in Woking, received a green transformation too. Standing at a height of 40m, it is believed to be the tallest in the UK outside of London. Aside from its size, the Dukes Court wall incorporates bird boxes and insect hotels, which will continue to positively impact the area for many years to come.

Both projects were completed using native plants to Woking for maximum biodiverse value, and ANS Global's commitment to harnessing the power of nature to improve our spaces continues.

For more information on the projects mentioned above, or to find out more about ANS Global and what they can do, please visit ansgroupglobal.com.

Media:



Related Sectors:

Construction & Property ::
Environment & Nature ::

Scan Me:



Company Contact:

—

ANS Global

T. 01243545818

E. enquiries@ans.global

W. <https://www.ansgroupglobal.com/>

[View Online](#)

Additional Assets:

Newsroom: Visit our Newsroom for all the latest stories:

<https://www.ansglobal.pressat.co.uk>