

## Adjust your margins! LGBTQI artists showcase their artistic bent at London art fest GFEST 2016

Monday 10 October, 2016

AN ECLECTIC SHOWCASE OF ART, FILMS AND PERFORMANCE WORK BY LGBTQI ARTISTS FROM LONDON, UK AND BEYOND

Monday 7 November – Saturday 19 November 2016

[www.gaywisefestival.org.uk](http://www.gaywisefestival.org.uk)

An annual platform for LGBTQI (Lesbian, Gay, Bisexual, Transgender, Queer and Intersex) artists and organisations, the **9th GFEST - Gaywise FESTival** runs Monday 7 – Saturday 19 November 2016 at venues across London.

The GFEST 2016 full programme details are live on the GFEST website: <http://gaywisefestival.org.uk>.

**The Mayor of London, Sadiq Khan, said:** “As a Mayor for all Londoners, I want to say loud and clear that our city is open to everyone – regardless of background or sexuality. We don’t simply tolerate each other, but respect, embrace and celebrate our differences. GFEST is a unique event in London’s cultural calendar, reaching out to the wider international LGBTQI community and celebrating the work of LGBTQI artists and performers. It showcases our diversity and highlights our reputation as one of the most LGBT friendly cities in the world.”

“In 2016 some artists and some LGBTQI people still feel that aspects of their ‘Out & Proud’ identities can be seen as marginalised and this contrast is explored in this year’s GFEST theme,” **says GFEST artistic director Niranjan Kamatkar.** “Despite all the fundraising challenges, we are still carrying on, putting forward a message that GFEST is there for the celebration of all LGBT artists and practitioners, promoting artistic excellence being at the heart of LGBTQI future.”

### FILMS: ‘Crossing the Marginal’

GFEST 2016 films explore these themes with a feature-length line-up that includes recently completed LGBT works and some UK and London premieres: Jonathan, Brothers of the Night, Gender Troubles. Short films include a number of UK films: Denise, Open Plan, Dawn and Away with Me. The film events will take place at the Rich Mix cinema in Shoreditch and the Arthouse Crouch End cinema in from 12 to 17 November and will include filmmakers Q&A with the audience.

A special African LGBT cinema evening is planned at the Bernie Grant Arts Centre in Tottenham on 13 November with community group Q&A.

### PERFORMANCES: ‘Marginal Play’

This double-bill evening full of LGBTQI music and dance is at RADA Studio in Cheries Street on Saturday 19 November.

The evening starts with composer Benjamin Tassie performing his music set for acoustic instruments and electronics. He has also developed a new music piece for an original dance work ‘Marg - a pathway’ which concludes the double bill. Specially commissioned for GFEST 2016, this dance work offers two narratives from the Indian epic Mahabharata, exploring the ageless nature of gender fluidity and sexual diversity. Choreographed by Subodh Rathod and presented in collaboration with the University of Roehampton dance and music departments.

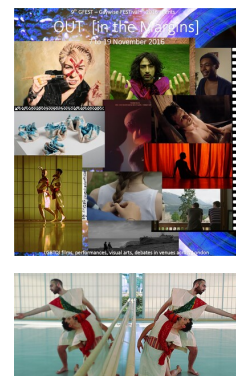
This is a fundraiser event for GFEST 2016 and GFEST 2017 new commissions to ensure that GFEST becomes an even stronger platform for LGBTQI artists.

### VISUAL ARTS: ‘Beyond Margins’

A series of challenging and insightful works can be seen at GFEST 2016 visual art exhibition at Menier Gallery, (Upper Gallery), from 7 November to 12 November. This year’s line up of artists include: Ajamu X and Khalil West, Jason Carr, Jose Gomez, Niranjan Kamatkar, Sarah Jane Moon, Simon Croft and Veronica Slater. Free entry.

A panel discussion OUT [in the Margins] will take place on Saturday 12 November at the Menier Gallery exploring how the work presented at the exhibition relates to or contrasts with preconceived notions.

### Media:



### Related Sectors:

Business & Finance :: Charities & non-profits :: Consumer Technology :: Education & Human Resources :: Entertainment & Arts :: Environment & Nature :: Leisure & Hobbies :: Media & Marketing :: Men's Interest :: Travel & Tourism ::

### Related Keywords:

Lgbt :: London :: Gay :: Art :: Film :: Music :: Dance :: Festival ::

### Scan Me:



On Sunday 13 November, Sara Wajid, the renowned museum professional will take us on the GFEST 2016 queer art tour at the Tate Modern public exhibition in the new Switch House.

## Company Contact:

—

### Wise Thoughts

T. 020 888 99 555

E. [info@wisethoughts.org](mailto:info@wisethoughts.org)

W. <http://www.wisethoughts.org/>

### **Additional Contact(s):**

<http://www.gaywisefestival.org.uk/>

[View Online](#)

### **Additional Assets:**

<http://www.gaywisefestival.org.uk/>

**Newsroom:** Visit our Newsroom for all the latest stories:

<https://www.wisethoughts.pressat.co.uk>