

**NOCO<sup>®</sup>**  
**Since 1914**

V18

# About **NOCO.**

The NOCO Company was founded in 1914 in Cleveland, Ohio. Joseph Henry Nook, a local tire and battery distributor, set out to develop a product that would prevent battery corrosion. After several hundred different formulations, Mr. Nook began commercially manufacturing and distributing the world's first Battery Corrosion Preventative which he called NCP2. NCP2 is an acronym for “**No Corrosion Product**” which is applied in “**2 Steps**”. The NCP2 brand quickly became a household name in every major battery and automotive shop. For over 100 years, the NCP2 brand has been preventing battery corrosion on more than one billion vehicles and applications worldwide.

Since then, NOCO has grown into a leading designer and manufacturer of innovative consumer-based battery and power products.

The NOCO Company

30339 Diamond Parkway, #102

Glenwillow, OH 44139

United States Of America

800.456.6626

no.co



**NOCO**<sup>®</sup>  
Since 1914



**NOCO**  **genius** **BOOST HD**  
15700 joules<sup>95</sup> **GB70**  
12V 2000A

25% 50% 75% 100%





# BOOST™

Ultra**Safe**® Lithium  
Jump Starters

**Safely** jump start  
a dead battery  
in seconds.®

# Safe, powerful jump starting.

Designed for most vehicles including ATVs, lawn mowers, motorcycles, cars, trucks, boats, RVs, tractors, equipment, and more. The new, more powerful models are for diesel and high-displacement engines, but are still safe on engines of all sizes.

## GB20

12V 400A

**4650**joules<sup>3S</sup>

**4.0L** Gas Only



Sport & Car

## GB40

12V 1000A

**7000**joules<sup>3S</sup>

**6.0L** Gas **3.0L** Diesel



Car & Truck

## GB70

12V 2000A

**15700**joules<sup>3S</sup>

**8.0L+** Gas **6.0L** Diesel



Heavy Duty



**NOCO** Patented Technology.

Visit [no.co/patents](http://no.co/patents). Multiple domestic and international patents pending.

joules = Power (w) x Time (sec)

**joules<sup>3S</sup>** is the actual amount of power delivered over 3 seconds.

## GB150

12V 4000A

**22500joules<sup>3S</sup>**

10.0L+ Gas & Diesel



Professional

## GB500

12V & 24V 20000A

**80000joules<sup>3S</sup>**

Class 8+ / CE Gas & Diesel



Commercial

UltraSafe Lithium  
Jump Starters

BOOST

genius



GB500

12V

NOCO BOOST MAX

25.2V

50000

24V

F63



A close-up photograph of the front left corner of a yellow tractor. The image shows a large, black, treaded tire mounted on a yellow hub. A black plastic fender arches over the tire. In the background, a person wearing a black cap is partially visible, looking out from the tractor's operator's seat. The overall scene is brightly lit, highlighting the textures of the rubber, plastic, and metal.

**Massive** power.

# LED

Ultra-bright LEDs.

<b>GB20</b>	Dual LED	100 Lumen
<b>GB40</b>	Dual LED	100 Lumen
<b>GB70</b>	8 LED	400 Lumen
<b>GB150</b>	10 LED	500 Lumen
<b>GB500</b>	Dual LED	2200 Lumen



7 light modes  
including flashlight and  
emergency strobe.

Charge smart phones,  
tablets, GPS and more.



USB

2.1A USB OUT

+

2.1A Micro USB IN

(USB In Excludes GB500)



# 12V power port.

For tire pumps,  
inverters, lights +  
more.

Included in  
GB70, GB150 & GB500.



# Voltmeter.

Exclusively on GB150 & GB500.



Quickly diagnose starting problems with an integrated voltmeter.

**DANGER**  
Liquido corrosivo. Contiene Acido Sulfurico. Acid (Sulfuric Acid).  
10-14-16

**DANGER**  
Le Batterie Piene di Acido Sulfurico (Sulfuric Acid)  
Corrosive: Piletti, Acido Sulfurico (Sulfuric Acid)  
Corrosive: Piletti, Acido Sulfurico (Sulfuric Acid)





**NOCO**   
**genius**

**G7200**  
7.2A (7200mA)

**MODE** 

25% 50% 75% 100%

**12V** 2A **24V** 1.5A

Normal SOUP Auto SOUP Auto

12V 13.6V

REPAIR SUPPLY

12V AGM 7.2A 12V LITHIUM 2.0A

72000mAh (3000mAh)

The background of the advertisement is a close-up, slightly blurred photograph of an engine compartment. In the foreground, a green battery charger is visible, featuring a silver mesh heat shield and a black adjustment knob. Blue cables are coiled in the background. The NOCO logo, consisting of the word "NOCO" in a bold, white, sans-serif font and a stylized atomic symbol to its right, is positioned at the top center. Below the logo, the word "genius" is written in a large, white, lowercase, bold sans-serif font with a registered trademark symbol (®) at the end.

**NOCO**   
**genius**®

**Smart** multi-purpose  
battery chargers.

UltraSafe, smart battery chargers designed  
to charge and maintain all battery sizes.

# Smart charging, for all sizes.

Designed for ATVs, lawn mowers, motorcycles, cars, trucks, boats, RVs, tractors, equipment, and more.

## G4

6V&12V  
1.1A X 4

Modes:  
12V Norm  
12V Cold/AGM  
6V Norm  
12V Lithium



## G750

6V&12V  
.75A

Modes:  
12V Norm  
6V Norm



## G1100

6V&12V  
1.1A

Modes:  
12V Norm  
12V Cold/AGM  
6V Norm  
12V Lithium



## G3500

6V&12V  
3.5A

Modes:  
12V Norm  
12V Cold/AGM  
12V Norm Small  
12V Cold/AGM Small  
6V Norm  
12V Lithium  
12V Repair



## G7200

12V&24V

7.2A

Modes:

12V Norm  
12V Cold/AGM  
24V Norm  
24V Cold/AGM  
12V Lithium  
12V AGM+  
12V Supply  
12V Repair



## G15000

12V&24V

15A

Modes:

12V Norm  
12V Cold/AGM  
24V Norm  
24V Cold/AGM  
12V Lithium  
12V AGM+  
12V Supply  
12V Repair  
+ JumpCharge  
[Vehicle Starting]



## G26000

Modes:

12V Norm  
12V Cold/AGM  
24V Norm  
24V Cold/AGM  
12V Lithium  
12V AGM+  
16V Lithium Racing  
16V AGM Racing  
12V Supply  
12V Repair  
+ JumpCharge  
[Vehicle Starting]

12V&24V

26A



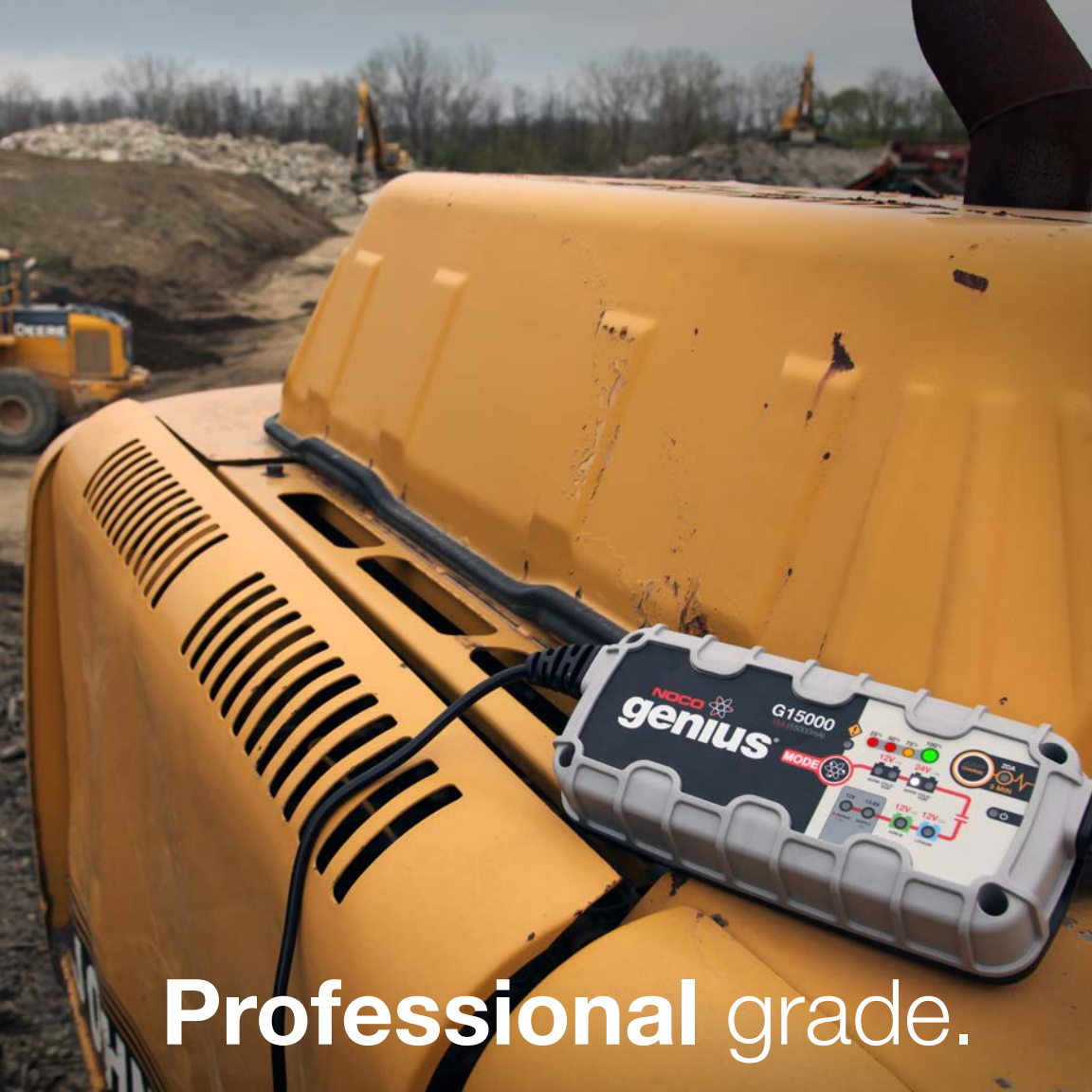
Smart Multi-Purpose  
Battery Chargers

genius®



**Small, yet powerful.**





**Professional grade.**



## Start-Stop.

Counteracts increased cyclic energy demands placed on batteries in micro-hybrid vehicles.



## Firewall.

Multi-level safety barrier prevents unsafe and abnormal conditions.



## Optimization.

Stabilizes internal battery chemistry for increased performance and longevity.



## Load Tracking.

Dynamically changes charge current when a load is placed on the battery.



## Diagnostics.

Intuitive visual diagnostic tool for detecting reverse polarity, low-voltage or damaged batteries.



## Energy-Save.

Minimizes energy consumption when full power is not needed.



## Thermal Monitor.

Internal temperature sensors adjust charge based on ambient climate.



## Safe.

Protects against reverse polarity, sparks, overcharging, overcurrent, open-circuits, short-circuits and overheating.



## Memory.

Returns to last selected mode when restarted.



## Interactive.

Alters the charging process based on organic battery feedback.



## Recovery.

Applies a high-voltage pulse charge when low-voltage, sulfation, or lost capacity is detected.



## Rugged.

Dirt, water, UV, impact, and crush resistant.



## CANBUS.

Automatically enables the charging port to charge CANBUS systems.



## Maintenance Plus.

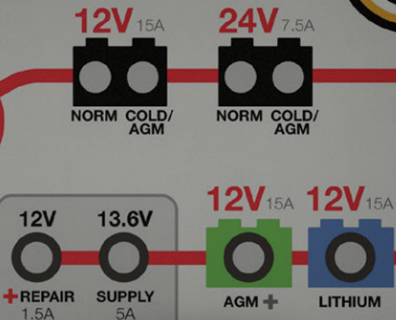
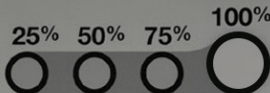
Keeps the battery fully charged without overcharging, indefinitely.

# Advanced diagnostics.

**G15000**  
15A (15000mA)

**S**<sup>®</sup>

**MODE**



Standard on all **G Series** and **GX Series** Chargers.



Identify problems to solve them more efficiently.



Advanced diagnostics analyze the battery and display specific errors if a problem is detected. The flash pattern tells you what is wrong so you can quickly fix it:

Single Flash: Battery will not hold a charge and should be checked by a professional.

Double Flash: Possible battery short, and should be checked by a professional.

Triple Flash: Battery voltage is too high for the selected charge mode. Double check the battery matches the charge mode.

Error LED Solid Red: Reverse polarity. Reverse the connections to the battery.

Standby LED Solid Orange: Battery voltage is too low for charger to detect the battery.





The background of the advertisement is a close-up photograph of industrial machinery, featuring green painted metal components and a grey circular part, possibly a motor or a wheel hub. A red cable is visible, running across the scene. The NOCO logo, consisting of the word "NOCO" in a bold, white, sans-serif font followed by a stylized atomic symbol, is positioned at the top center. Below it, the word "genius" is written in a large, bold, white, lowercase sans-serif font with a registered trademark symbol (®) to its upper right.

**NOCO**   
**genius**®

**Smart** industrial  
battery chargers.

UltraSafe, universally adaptable chargers designed  
for heavy-use industrial vehicles, anywhere.

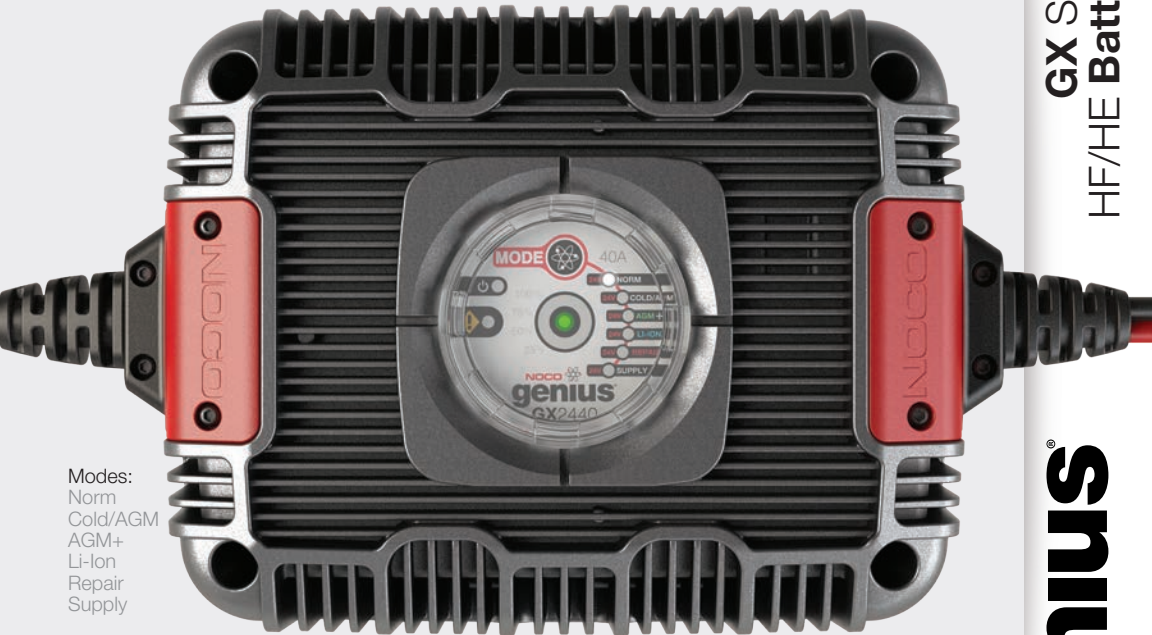
**Industrial**  
strength.



**Control.**  
Interchangeable  
cables & secure  
interface.

# 92% Efficiency.

Precision aluminum body. Waterproof & tamperproof interface. Compact industrial on-board chargers.



Modes:  
Norm  
Cold/AGM  
AGM+  
Li-Ion  
Repair  
Supply

3 models available, same compact size & advanced features:

**GX2440**  
24V 40A

**GX3626**  
36V 26A

**GX4820**  
48V 20A

**GX Series Industrial  
HF/HE Battery Chargers**

**genius**





**Inhibit port.**

Prevent vehicle and equipment operation while charging.

**Remote LEDs port.**

Used to connect LEDs for easy monitoring when the charger's LEDs are not accessible.

# Universal input, flexible output.

Interchangeable AC and DC cables.

**GXC101**

NA Type B



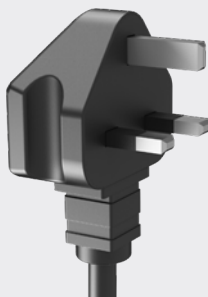
**GXC102**

EU Type F



**GXC103**

UK Type G



**GXC104**

AU Type I



**GXC002**

HD Eyelet  
Connectors



**GXC005**

Anderson SB50  
Cable



**GXC006**

Club Car Cable  
3-Pin Round Plug



**GXC007**

EZ-GO Cable  
3-Pin Triangle Plug



**GXC008**

Yamaha Cable  
2-Pin Plug



**GXC009**

EZ-GO Cable  
Powerwise D Plug



**GX Series**  
**Accessories**

**genius**



**GEN 4**  
4 BANK 40A

**NOCO**  
**genius**



CHARGE   
BANK 1  
12V OUT 10A

CHARGE   
BANK 2  
12V OUT 10A

CHARGE   
BANK 3  
12V OUT 10A

CHARGE   
BANK 4  
12V OUT 10A

DC IN





**NOCO**   
**genius**<sup>®</sup>

**GEN**  
**Waterproof** on-board  
battery chargers.

UltraSafe, smart battery chargers designed to fully charge and maintain batteries in extreme environments.

# Waterproof smart charging.

Designed for marine and industrial applications where durability is crucial. Completely sealed, 100% waterproof.

## GEN 10A/Bank

### GCP1

AC Port w/Integrated  
Extension Cable



### GEN1

12V 10A



### GEN2

12V 20A  
2 Bank



# GEN MINI 4A/Bank

## GENM1

12V 4A



## GENM2

12V 8A  
2 Bank



## GENM3

12V 12A  
3 Bank



## GEN3

12V 30A  
3 Bank



## GEN4

12V 40A  
4 Bank



Smart Waterproof  
On-Board Battery Chargers

# genius

Designed **tough.** IP68







## Waterproof.

100% completely sealed, protects against extreme working environments & rated at IP68.



## Safe.

Protects against reverse polarity, sparks, overcharging, overcurrent, open-circuits, short-circuits, and overheating.



## Firewall.

Multi-level safety barrier prevents unsafe and abnormal conditions.



## Interactive.

Alters the charging process based on organic battery feedback.



## Recovery.

Applies a high-voltage pulse charge when low-voltage, sulfation, or lost capacity is detected.



## Optimization.

Stabilizes internal battery chemistry for increased performance and longevity.



## Ignition Protected.

Non-igniting and temperature controlled for safe and worry-free operation.



# NOCO<sup>®</sup> X GRID

**Power** the adventure.

Ultra-compact, rugged, and expandable mobile power products. Recharge on the go.



# Lithium battery packs. Rugged. IP65

Water, dust, and impact resistant.

3000mAh  
11.1Wh  
1A IN/OUT



USB 

**XGB3**



12000mAh  
44.4Wh  
2.1A IN/OUT

3000mAh  
11.1Wh  
1A IN/OUT

250 Lumen LED Flashlight



**XGB3L**

**XGB12**





**BATTERY  
LIFE+**

®



**Solar** battery chargers.

# BATTERY LIFE+ SOLAR 5

5W Solar Battery Charger + Maintainer



# BATTERY LIFE+ SOLAR 2

2.5W Solar Battery Charger + Maintainer



**NOCO XCONNECT**

Compatible with all NOCO X-Connect accessories.

Rigid Solar Panel  
**12V** Auto Kits

**BATTERY LIFE+**



**Maintenance, perfected.**



Lead Acid

Wet

Gel

MF

EFB

AGM

**12V**

Auto | Marine | RV | Powersport | Lawn & Garden

## Waterproof.

Weather resistant solar charger for outdoor use rated at IP65.

## UV Resistant.

Engineered to take the abuse of the sun through the use of color stabilization and UV inhibitors.

## Designed for Safety.

Short circuit, open circuit, overheat, and overcurrent protected.

## Thin Film Technology.

Works well in low-light, cloudy, and overcast conditions.

## Black Current Protection.

Protects the battery from accidental back current drain at night.

## Ultra Low-Profile.

Unique low-profile design for a light weight, compact charger.

## Rugged Frame.

Made from an engineered polymer for high-strength and durability.

Rigid Solar Panel  
**12V** Auto Kits

**BATTERY LIFE+**

# Dependable charging accessories.



**GC001**

## Battery Clamp Connector

Quickly connect to any battery, or keep attached for convenient charging.



**GC002**

## Eyelet Terminal Connector

Permanently mount one on your ATV, Motorcycle, Car, Boat or any other vehicle for easy charging.



**GC003**

## 12V Plug Connector

Charge and maintain your vehicle's battery by plugging into the 12V auxiliary plug.



**GC004**

## 10' Extension Cable

Extend the reach of your NOCO chargers and accessories with the GC004 10' Extension Cable.



**GC008**

## XL Eyelet Terminal Connector

Connect to batteries with 3/8" terminals. Permanently mount eyelets to your vehicle.

**GC009**



## SAE Adapter

**GC010**



## 12V Plug Female Outlet

Use with a G7200 in supply mode to create a 12V outlet, or pair with the GC013 Male-to-Male.



**GC011**

**12V Plug Connector (Dual Size)**

The dual size adapter fits both standard size 12V plugs & mini 12V outlets on motorcycles.



**GC012**

**OBDII Connector**  
Connect to the OBDII Connector found in vehicles 1996 and newer.

**GC013**



**Male-to-Male Coupler**



**GC015**

**12V Eyelet Battery Indicator**  
Built-in LEDs indicate the charge level of the battery, for ongoing monitoring.



**GC016**

**12V Dashmount Battery Indicator**

Quickly connect to any battery from wherever the Dashmount Battery Indicator is located.



**GC024**

**XLR Connector**  
Quickly connect to any 24V XLR port (commonly found on power wheelchairs) with the G7200.



**GC032**

**HD Battery Clamps w/Integrated Eyelet Connector**

Connect quickly to any battery or permanently mount the eyelets (For G15000 & G26000 Only).



**Boost** accessories.



15700mAh

Genius BOOSTHD

GB70



# Safe, jump starting accessories.



**HD Boost Battery Clamps**

Heavy Duty clamps designed to efficiently transfer maximum current flow with minimal power loss, and silicone insulation for heat stability and flexibility.



**Powersport Battery Clamps**

Needle-nosed clamps designed for powersport applications. Equipped with integrated eyelets allowing for permanent battery-mounting.



**Boost Eyelet Cable w/Charging Adapter**

Permanently mount a Boost Eyelet Cable to difficult-to-access batteries and use the X-Connect charging adapter to connect to a Genius Charger.



**Boost Eyelet Cable w/Charging Adapter (SAE)**

Permanently mount a Boost Eyelet Cable to difficult-to-access batteries and use the SAE charging adapter to connect to a charger.



**GBC012**

**Boost Settings Keeper**

Boost Settings Keeper allows you to change or disconnect your car battery without losing your programmed electronic settings.  
(Compatible with GB70, GB150, and GB500)

**NUSB211NA**



**AC USB Charger**

10W AC USB Charger Type A for rapidly charging devices that recharge using a USB cable - including Boost.



**XGC4**

**XGC4 Power Adapter**

Recharge Boost five times faster with the 56W XGC4 AC Power Adapter. Compatible with GB70, GB150, and GB500.

**Protective cases.**



# Rugged storage.

Protective EVA hard cases designed and made exclusively to fit Boost UltraSafe® jump starters.



**Boost Series**  
**EVA Cases**

**NOCO**®



12V accessories.



# Universal 12V accessories.

12V Accessories

**GC017**



**12V Plug w/Battery Clamps**

Instantly tap into a 12V battery's power and create an easy-to-use 12V port.

**GC018**



**12V Plug w/Eyelet Terminals**

Turn any 12V battery into an AUX 12V port.

**GC019**



**12V Plug 12' Extension Cable**

Extend the reach of your 12V ports with this heavy duty 12' extension cable.

**GC020**



**12V Plug 2-Way Splitter**

Expand a 12V AUX port and plug in multiple 12V devices at the same time.

**NOCO**<sup>®</sup>



Keep away from children  
Avoid contact with skin  
After Use.

CB104

Made in  
USA

Invented In 1914, The Original

Brush-on  
**NCP2**

Corrosion  
Inhibitive



Ultra Premium  
**Oil Based**  
Proven Formula



# NCP2<sup>®</sup>

**Oil-based** battery  
corrosion preventative.

Premium oil-based preventative that never dries,  
protecting your battery from harmful corrosion.

# The original battery corrosion preventative since 1914.

Designed to stop corrosion for the life of your battery. The NCP2 oil-based compound never dries or evaporates.

## CB104

NCP2 Battery Corrosion Preventative  
(4 oz.)



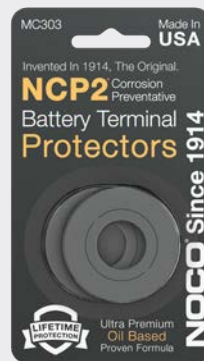
## B603

NCP2 Battery Corrosion Terminal Protectors  
(50 ct.)



## MC303

NCP2 Battery Terminal Protectors  
(2 ct.)



## M101S

NCP2 Battery Corrosion Preventative  
(1 oz.)



**MC101**  
 NCP2 Battery  
 Terminal Treatment Kit  
 (1 Fluid oz., 2 ct. Washers)



**A202**  
 NCP2 Battery  
 Corrosion  
 Preventative  
 (12.25 oz.)



**C506**  
 NCP2 Battery  
 Corrosion Preventative  
 (5 gal.)



**Corrosion Prevention**

**NCP2**



# REMOVE

Battery cleaner.



**Instantly** dissolve harmful corrosion.

Top-of-the-line battery cleaner for identifying and removing battery acid.

# Quick battery cleaning.

Professional-grade battery cleaning chemicals that neutralize, dissolve, and remove battery corrosion.

## E403

Remove Battery  
Cleaner  
(14 oz.)



## E404

Remove+ Battery  
Cleaner & Acid  
Detector  
(14 oz.)



## MB104

Remove Battery  
Terminal Treatment Kit  
(8.0 cc, 2 ct. Washers)



Battery Cleaner

REMOVE

# SQUEAKY



**Professional grade  
glass cleaner.**

Pro foaming agent for streak free, fast acting  
cleaning with no residue or abrasion.

# Spotless glass cleaner.

Professional grade, streak-free foaming glass cleaner that is tough on dirt, dust, bugs, and grime.

## E800

Squeaky Professional  
Grade Glass Cleaner  
(16 oz.)



Professional Glass  
Cleaner

SQUEAKY

# Snap-Top<sup>®</sup> & Commercial







**Impact-modified**  
reinforced battery boxes.

Proven to stand up to extreme temperatures,  
battery acids, and heavy wear and tear.

# Battery Trays

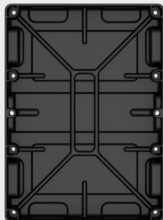
**Heavy Duty** injection-molded trays, compatible with J-bolts and straps.

# Snap-Top<sup>®</sup>

## Battery Boxes

### BT24

Group 24

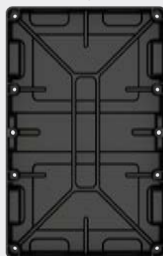


11.3 x 7.3in

Maximum Battery Footprint

### BT27

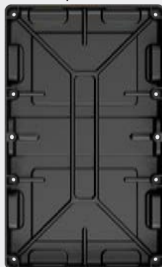
Group 27



13.1 x 7.3in

### BT31

Group 27-31



13.7 x 7.3in

### HM082BK

Group U1



8 x 5.2 x 7in

Maximum Battery Dimensions

### HM300BK

Group 24



10.5 x 7.2 x 9.6in

# Commercial Battery Boxes

**Durable** roto-molded battery boxes for marine and deep cycle batteries.

### HM426

Dual 6-Volt



14.6 x 10.5 x 11.5in

Maximum Battery Dimensions

### HM462

Dual L16



14.4 x 12 x 17.4in

### HM408

4D



21.2 x 9.6 x 11.1in

**Rugged** injection-molded battery boxes  
for marine and deep cycle batteries.

**HM306BK**

6-Volt



10.6 x 7.6 x 11.2in

**HM318BK**

Group 24-31



14 x 7.1 x 9.6in

**HM327BK**

Group 27



13.2 x 7.2 x 10in

**HM484**

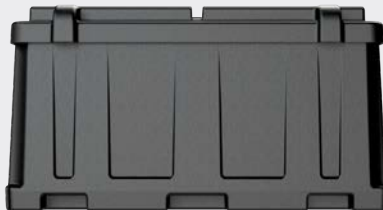
8D



21 x 11.8 x 10.3in

**HM485**

Dual 8D



21 x 23 x 10.6in

**Battery Trays & Boxes**

**NOCO**<sup>®</sup>

no.co

1914