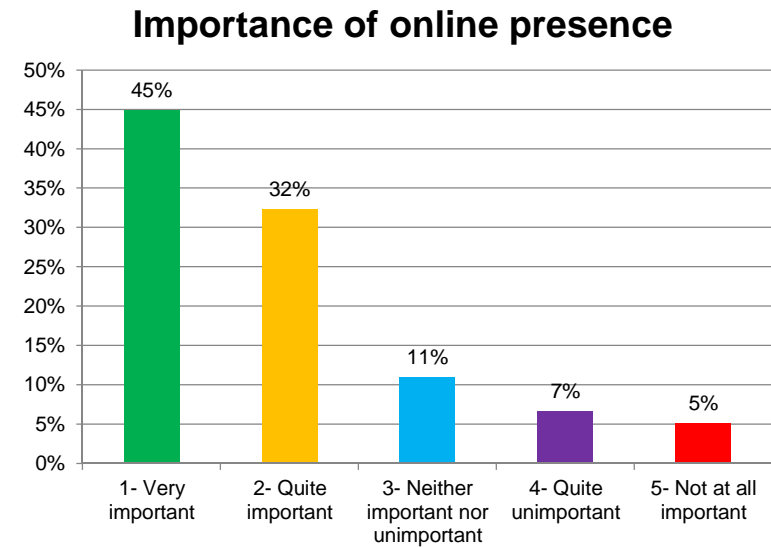


IT Infrastructure Outsourcing Survey 2013

Outcomes UK

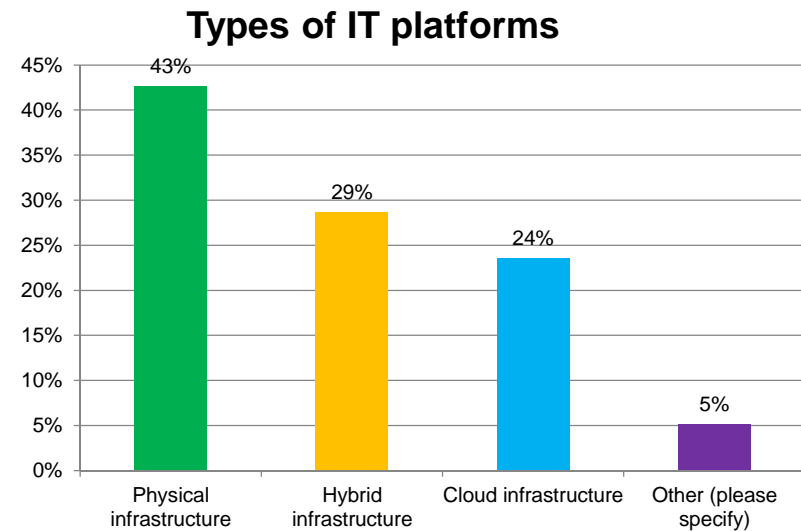
Importance of online presence

- Majority of the respondents, 77%, find that having an online presence is important
- Of which 45% find it very important and
- 32% quite important



Types of IT platforms

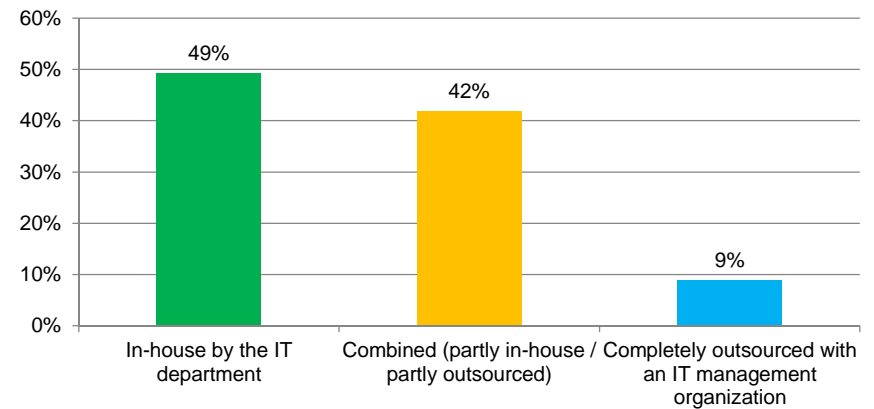
- The most common type of IT platform is the physical infrastructure (43%)
- Followed by hybrid infrastructure (29%) and
- Cloud infrastructure (24%)



Managing IT platforms

- 49% manage their IT platforms in-house, through their IT department
- Followed closely by 42% who use a combination of partly in-house and partly outsourced
- Very few (9%) have completely outsourced their IT management

Managing IT platforms



Priority for biggest challenges in managing IT platforms (score)

☉ The biggest challenge (also ranked as priority) in managing IT platforms is keeping up with new technologies and implementing those within the infrastructure

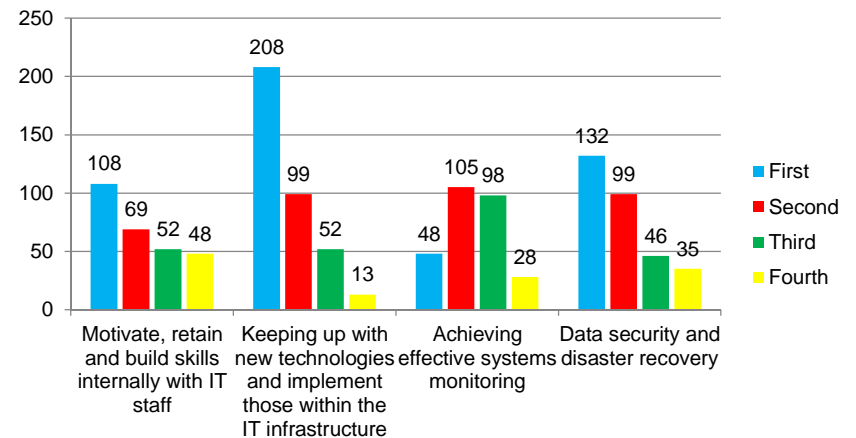
☉ Followed with data security and disaster recovery

☉ Rank:



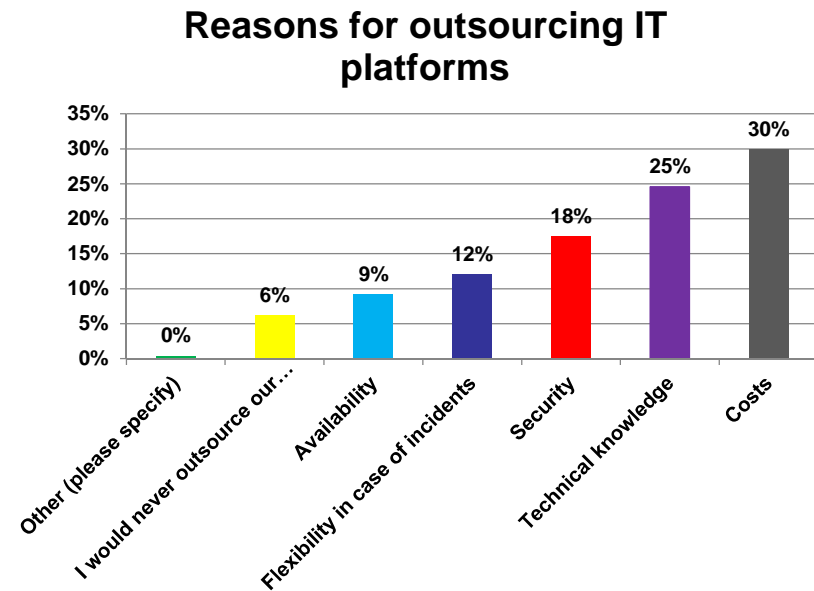
- ▶ 1. Keeping up with new technologies
- ▶ 2. Data security
- ▶ 3. Build skills with IT staff
- ▶ 4. Achieving effective monitoring

Priority for biggest challenges in managing IT platforms (score)



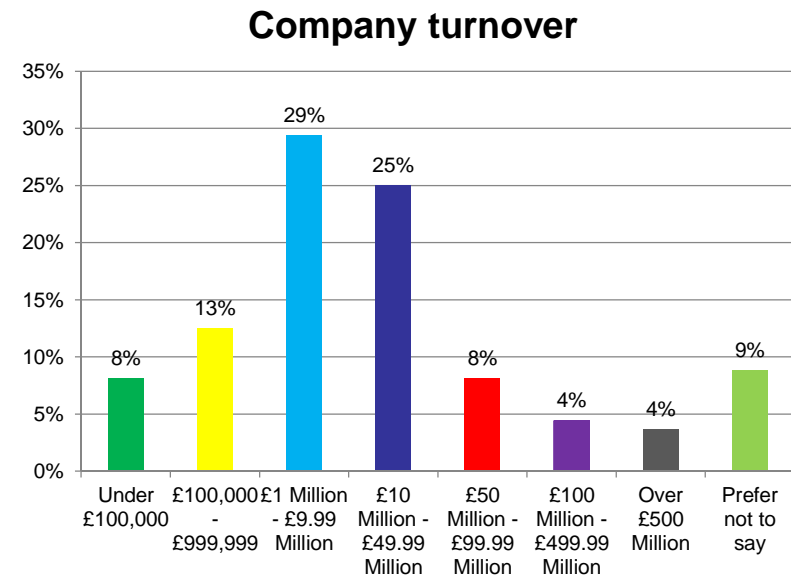
Reasons for outsourcing platforms

- The most important reason why IT platforms have or would be outsourced is due to Costs (30%)
- Followed closely by Technical knowledge (25%)
- And security (18%)



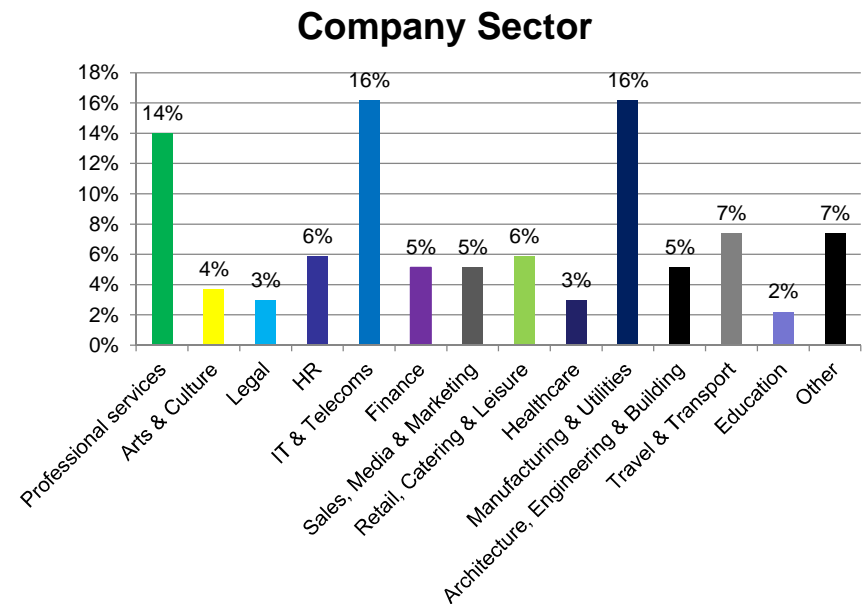
Company turnover

- 54% have between £1m-£50m company turnover
- Of which, the most common turnover within this group is £1-£10m, which represents 29% of all responses
- Followed closely by 25% having a turnover of £10-£50m
- 21% have a turnover under £1m and
- Only 16% have a turnover of £50m and over



Company sector

- 16% of responses are from the Manufacturing & Utilities sector as well as the IT & Telecoms sector and
- 14% are from Professional Services



Level / status of employment

- 63% of respondents are Middle Managers / Professionals and
- 18% are Senior Managers / Professionals which is
- Followed closely by 15% being Directors

